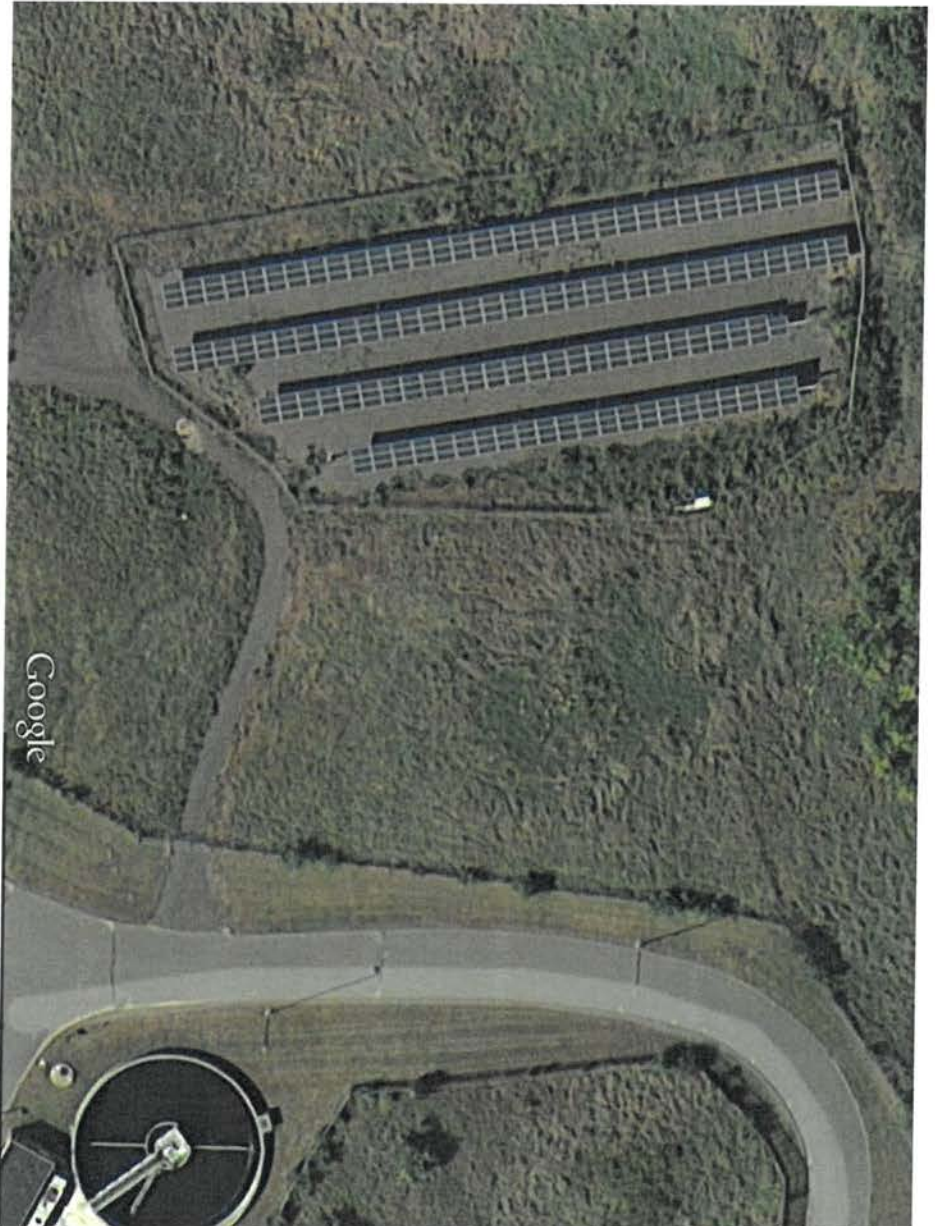


Green



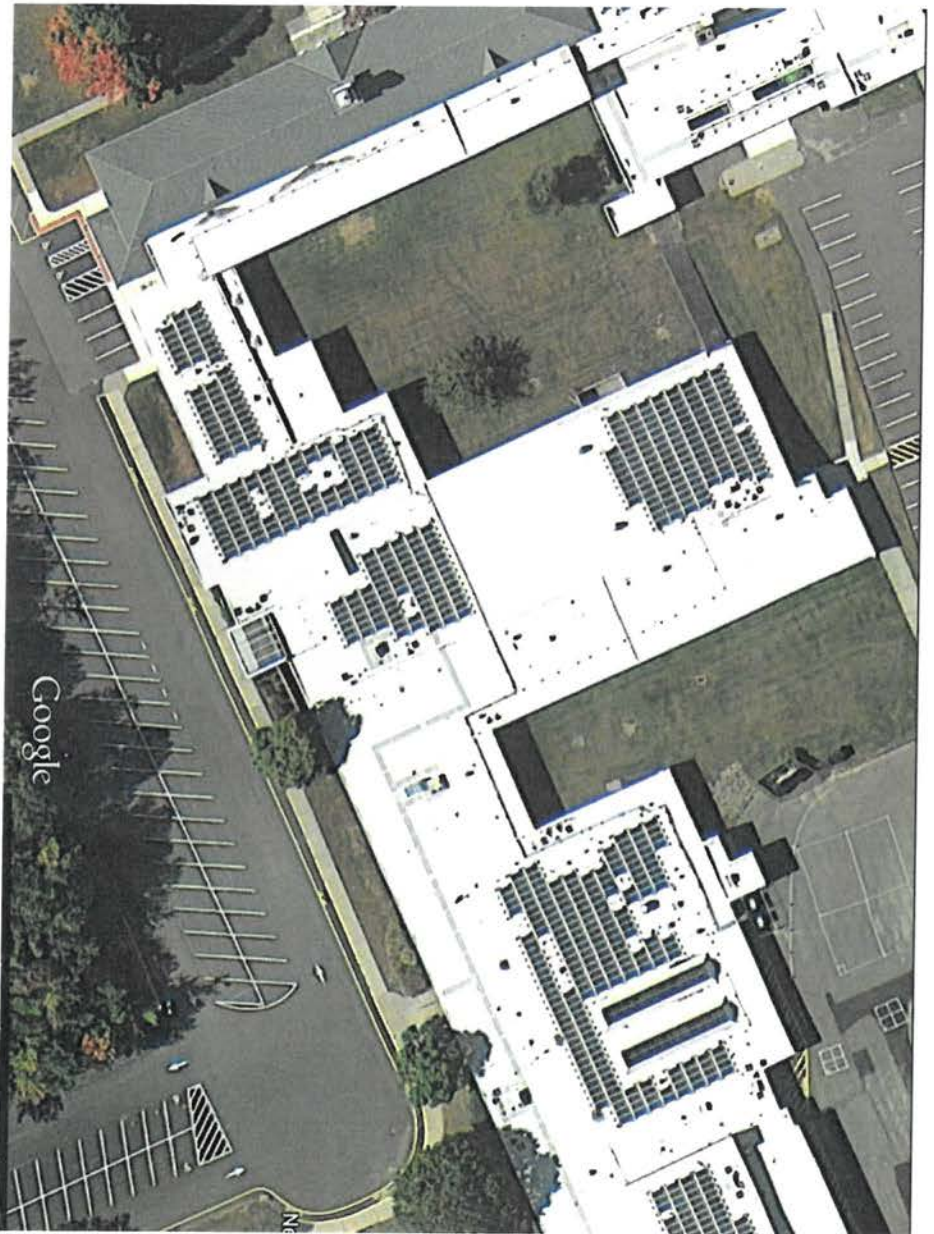
Newtown

Sustainable Energy Commission



WASTE WATER TREATMENT PLANT

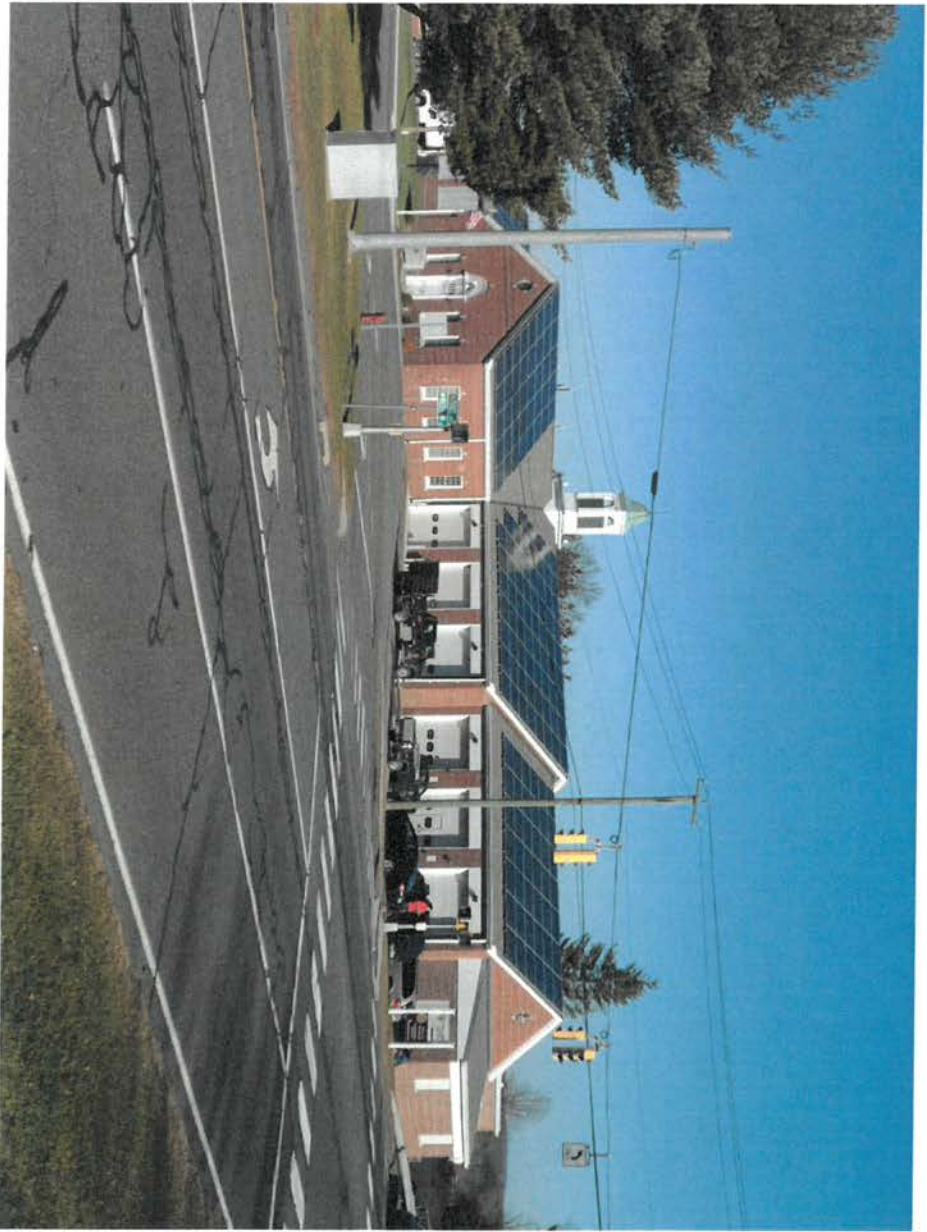
**95 kW, ANNUAL POWER PRODUCTION: 134,000 kWh
LAUNCH DATE - SEPT. 2012**



NEWTOWN MIDDLE SCHOOL

179 kW, ANNUAL POWER PRODUCTION 204,948 kWh

LAUNCH DATE: MAY 2013



PARKS & REC. GARAGE

100 kW ANNUAL POWER PRODUCTION 117,700 kWh

LAUNCH DATE: DEC. 2014



ANIMAL SHELTER OLD FARM RD.

18 kW ANNUAL POWER PRODUCTION 17,281 kWh

LAUNCH DATE: DEC. 2014

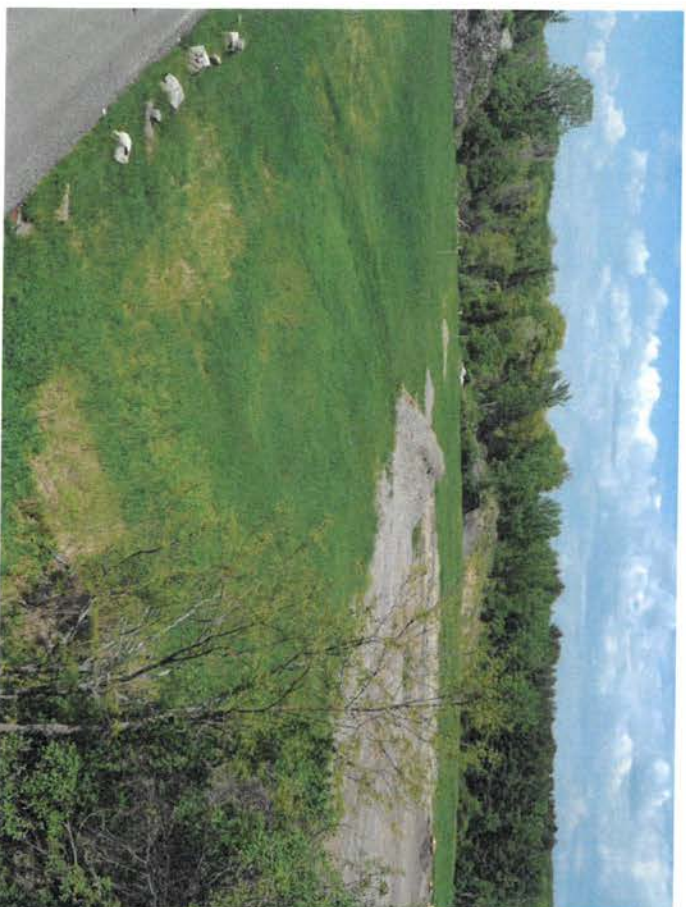


JOHN REED INTERMEDIATE SCHOOL 2009/2013

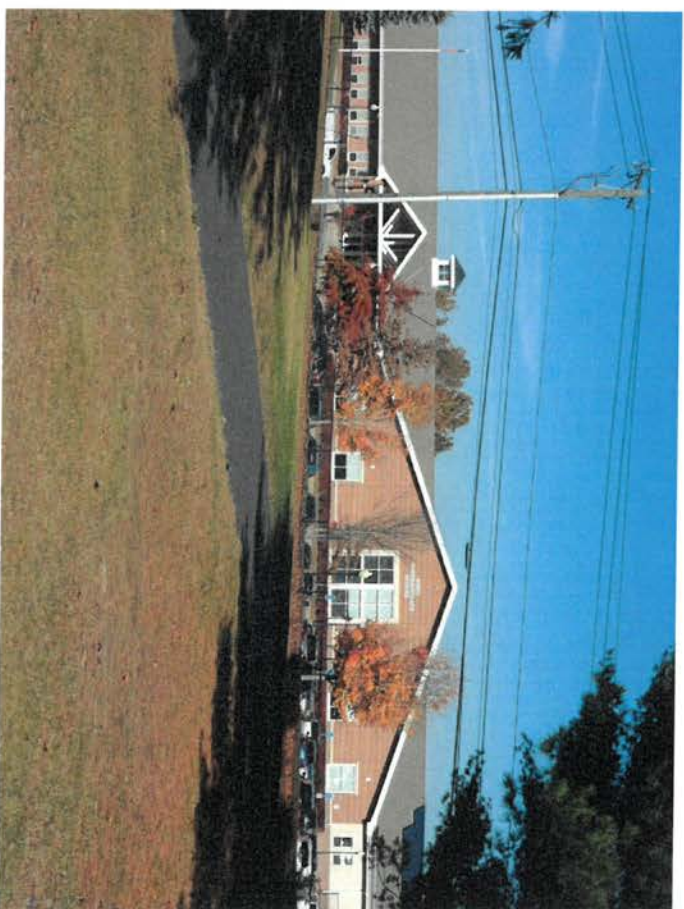
**PANELS EARNED THROUGH CLEAN ENERGY OPTIONS
PROGRAM. 10 KW ANNUAL OUTPUT EST. 12,000 KWH**

2017 SOLAR INSTALLATIONS (completed)

**NEWTOWN LANDFILL 4200 PANELS
1.3 MWDC 1,716,203 KWH EST. OUTPUT**



**JOHN REED INTERMEDIATE SCHOOL
618 KWDC 680,717 KWH EST. OUTPUT**



JOHN REED INTERMEDIATE SCHOOL

Launch date: July 2017 @ 635 kW DC Annual Power Production est. over 712,000 kWh

Installed by Direct Energy Solars and financed through a Power Purchase Agreement with the Connecticut Green Bank. System supplies approximately 40% of the power used by the school.



2018 and Future Solar Installations

- Sandy Hook School- completed
- 3 Fire Stations- completed
- Community Center 100KW
- Police Station 100KW
- Fire Station 100KW
- Buying 2MW from solar installation elsewhere and additional 2-3MW planned

42 NEW RESIDENTIAL INSTALLATIONS
370 ADDITIONAL KW



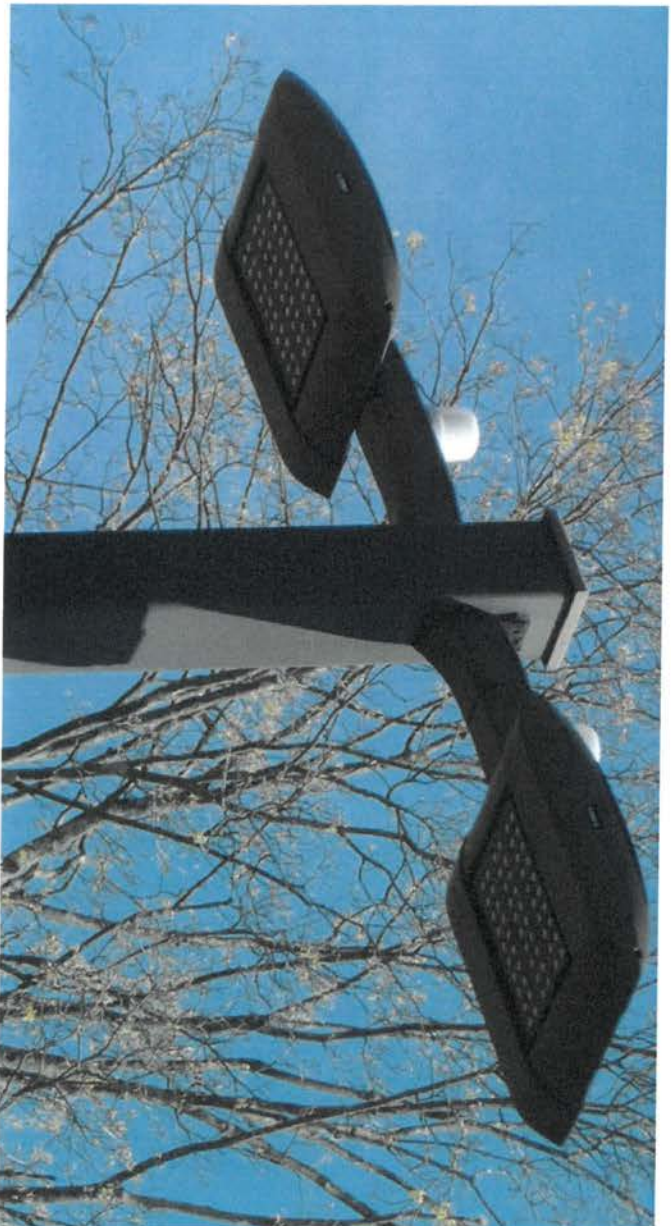


HOME ENERGY SOLUTIONS PROGRAM

TOWN SELECTED 3 HES VENDORS TO PROMOTE THE PROGRAM TOWN WIDE. 245 RESIDENTIAL UNITS SIGNED UP INCLUDING 129 INCOME ELIGIBLE UNITS AT NUNNAWAUK MEADOWS.

VENDORS CONTRIBUTED \$10,000 TO THE NEWTOWN FUEL BANK

HELPED NEWTOWN EARN \$10,000 BRIGHT IDEAS GRANT



BRIGHT IDEAS GRANT

**\$10,000 BRIGHT IDEAS GRANT WAS USED TO UPGRADE
31 PARK LIGHTING FIXTURES TO LED TECHNOLOGY.
ANNUAL SAVINGS APPROX. \$4,000.**



ENERGY SAVINGS - MIDDLE GATE SCHOOL

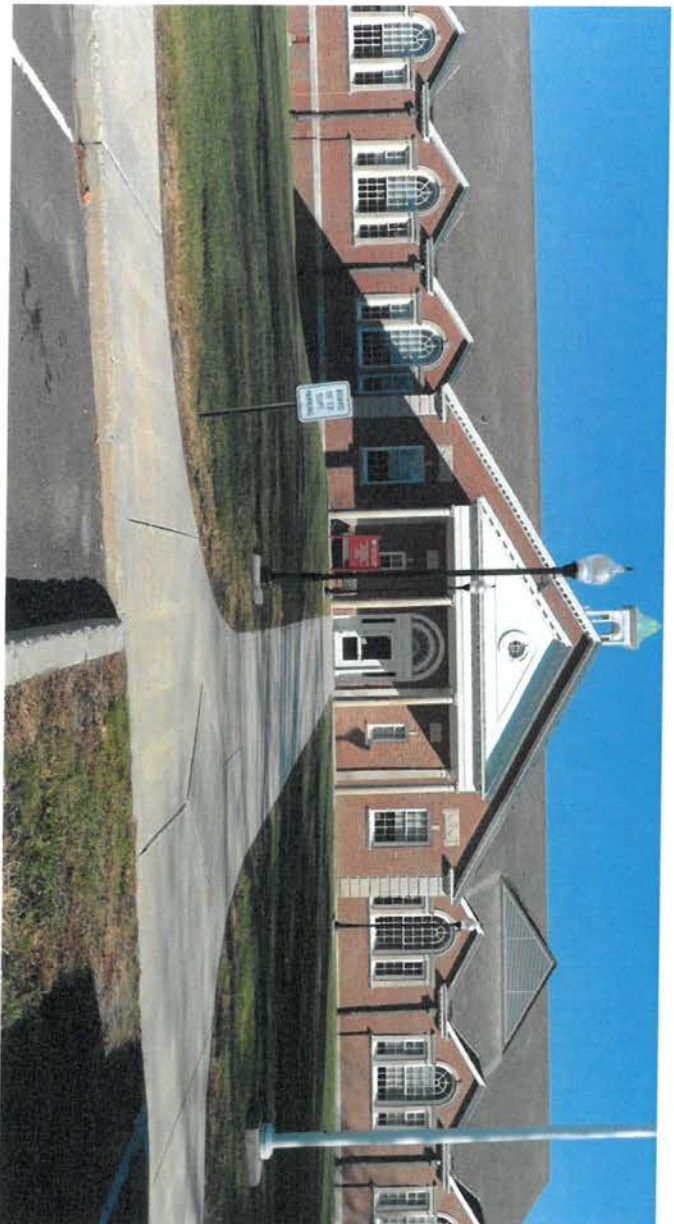
**ECMS: LED LIGHTING, GAS HOT WATER, GAS BOILER,
VFD CIRCULATING PUMPS**

ESTIMATED SAVINGS: 117,387 kWh

4,925 CCF

PROGRAM

SBEA



ENERGY SAVINGS - MUNICIPAL CENTER

ECM: LED LIGHTING

ESTIMATED SAVINGS: 86,506 kWh (16.5%)

SBEA

PROGRAM



ENERGY SAVINGS - WASTE WATER TREATMENT PLANT

ECMS: LED LIGHTING, REPLACE (2) AIR CONDITIONERS, REPLACE (2) GAS FIRED BOILERS, HVAC VARIABLE FREQUENCY FANS, REPLACE (7) TRANSFORMERS.

EST. SAVINGS: 104,431 kWh, 4,437 CCF **SBEA PROGRAM**

MICROGRID FEASIBILITY STUDY

PROJECT COULD ENCOMPASS :

- FAIRFIELD HILLS CAMPUS
- NUNNAWAUK MEADOWS HOUSING
- NEWTOWN HIGH SCHOOL
- GARNER CORRECTIONAL INSTITUTION



SANDY HOOK ELEMENTARY SCHOOL

HIGH EFFICIENCY ENVELOPE AND GLAZING SYSTEM, LED LIGHTING AND OCCUPANCY SENSORS IN MOST AREAS. HIGH EFFICIENCY AIR-COOLED CHILLER AND HOT WATER BOILERS. DEMAND CONTROLLED VENTILATION, WATER SAVING FIXTURES. SITE ENERGY SAVINGS

(BUILDING CONSUMPTION) - 32% MORE EFFICIENT THAN BASELINE.

ADDITIONAL PROJECTS

- GRANT REWARD DOLLARS WILL BE USED TO FINALIZE STREET LIGHT STUDY AND TO PURCHASE AN EV CHARGING STATION
- PUBLIC BUILDING AND SITE COMMITTEE HAS ADOPTED SUSTAINABLE GUIDLINES TO BE IMPLEMENTED IN FUTURE CONSTRUCTION PROJECTS.
- CONTINUE USING SBEA PROGRAM ON REMAINING TOWN BUILDINGS.

TREE LIGHTS

HOLIDAY TREES IN
THE CENTER OF
TOWN AND SANDY
HOOK ARE NOW
DECORATED WITH
ENERGY SAVING LED
LIGHTS

